



Lombardo Homes INTRODUCES THE Cranbrook TO St. Louis

The strongest first impressions and the longest lasting memories are built of brick and stone.

Beauty, strength, comfort, craftsmanship and tradition all intersect in the Cranbrook series of custom homes. **Lombardo Homes** perfected their Cranbrook brand in their native state of Michigan before introducing the series to Saint Louis this year.

Stunning design and subtle color combinations of stone and brick merge to create bold new definitions of luxury, quality and value.

“Lombardo Homes understands the power and impact brick and stone add to the homes they build,” said **Brett Lampkin**, President of **Lampkin Masonry**.

CONTINUED ON PAGE 2

INSIDEMASONRY

LOMBARDO HOMES
AND LAMPKIN
MASONRY

PAGE 2

MARY INSTITUTE
& COUNTRY DAY
SCHOOL

PAGE 4

2015-16 SEMINAR
SCHEDULE

INSERT

NEW PRODUCT,
NEW BUILDING
IN O'FALLON, IL

PAGE 7

C. DEWITT BROWN
LEADMAN AWARD
RECIPIENT:
JOHN SMITH JR.

PAGE 8

Volume 21
Issue 2

ALL PHOTOS BY MICHAEL DeFILIPPO EXCEPT WHERE INDICATED



THE HOME USES A SPLIT GROUPING OF FOUR FIELD STONES IN BOTH INTERIOR AND EXTERIOR PRESENTATIONS. THESE WOOD COLUMNS ON FIELDSTONE PIERS ARE RECURRING ELEMENTS THAT CONTINUE THROUGH THE HOUSE AND APPEAR AGAIN ON THE REAR PATIO.



WHAT APPEAR TO BE SIX DIFFERENT SHELVES ARE ACTUALLY OVER A DOZEN SMALLER SHELVES INDIVIDUALLY ATTACHED AND SEAMLESSLY JOINED. "THE MASONS DID A GREAT JOB OF INSTALLING THOSE SHELVES," SAID VAN PAMEL. "THEIR CRAFTSMANSHIP IS TOP NOTCH."



LEFT: THE SPLIT FIELDSTONE GROUPING CONTINUES IN THE REAR STAIRCASE. THE STONE IS CAPPED WITH A CAST STONE.



RIGHT: THE HOME FEATURES FOUR FIREPLACES. THE GREAT ROOM AND THE OUTSIDE PATIO ARE BOTH MASONRY. THE DRY STACK HUDSON LEDGE STONES WERE USED FOR THE HEARTH, KITCHEN, AND BASEMENT BAR.

The Lombardo Homes approach to custom home design involves offering customers a wide range of options.

Mike Van Pamel, of **Lombardo Homes**, refers to them as "memory points". Masonry features create a strong first impression and leave a solid lasting impression — particularly at the "Villanueva" model Cranbrook home in Wentzville.

A first glimpse of the new house is more color than form, as the warm tones of stone and brick radiate through the cool green leaves of surrounding shade trees. Texture follows this warm first impression as the expertly set brick

and stone is framed by the sharp diagonal lines of multiple front gables. Complimentary styles of masonry products wrap the home in a welcoming veneer of brick, fieldstone and split face block.

The house is deceptively large. It utilizes the ground's elevation to mask the spaciousness of a two-story home behind a ranch style brick front. Two wood columns set on stone piers support the front entry overhang. This feature of wood column on stone base is a design motif that is repeated throughout the house. Recurring elements like this help to build a strong memory of the entire home.

Lombardo Homes INTRODUCES THE Cranbrook TO St. Louis

CONTINUED FROM
THE COVER

*BRICK AND STONE CONSTRUCTION DEFINES THIS HOME, INSIDE AND OUT, TOP TO BOTTOM, FRONT TO BACK.
THE INTERPLAY OF STONE AND WOODED GROUNDS IS UNMATCHED IN THE INDUSTRY BY ANY OTHER BUILDING
PRODUCT FOR EVOKING THE FEEL OF RURAL SPLendor.*

At A Glance...

**Owner, General Contractor
and Architect –**

Lombardo Homes

Mason Contractor –

Lampkin Masonry

All Supplies –

Midwest Block & Brick

Craftworkers –

*Bricklayers' Union Local #1
of Missouri, Eastern Missouri
Laborers' District Council*

LEFT: INTERIOR MASONRY FEATURES LIKE THE KITCHEN'S DRY STACKED STONE ARCHED COOK TOP WITH STONE BACK SPLASH ARE A TRADE-MARK OF LOMBARDO HOMES. THE APPLICATION OF STONE IN A CLASSIC DESIGN GIVES A MODERN, CONVENIENT SPACE THE LOOK AND FEEL OF A RUSTIC KITCHEN.

RIGHT: THE INTERPLAY OF STONE, BRICK AND WOOD COLUMNS CREATE AN INDOOR/ OUTDOOR AREA WITH THE FEEL OF A RUSTIC LODGE. A HEARTH OF SPLIT FIELDSTONE ANCHORS THE COVERED PATIO ON THEREAR OF THE HOUSE.

Rooms where family and friends gather to make memories — the kitchen, patio, sitting room and recreation room — all feature signature stone elements. “The Cranbrook Renaissance and Cranbrook Vintage style homes are intended to reflect the versatility, flexibility and quality of construction we are capable of producing,” said **Van Pamel of Lombardo Homes**. “People are impressed by all the brick and stone in the exterior and interior of the home. These features linger with visitors long after their tour of the model home.”

Masonry makes a seamless transition from indoor life to outdoor fun as the home opens to a covered rear outdoor kitchen and patio. From cook space to countertop, stone gives this kitchen style. The patio offers woodland and pool deck views through frames of stone and brick walls and column bases. Anchoring this three-season space is a working fireplace set in a beautiful fieldstone hearth.

A fieldstone staircase leads from the patio to the pool deck. The home's western face exhibits another beautiful view of a memorable masonry home.

MASONRY: THE SMART CHOICE



MARY INSTITUTE AND COUNTRY DAY SCHOOL LINKS SCIENCE AND TECHNOLOGY WITH TRADITION THROUGH MASONRY

Masonry is the smart choice for building construction. The top academic campuses in the world choose brick and stone for their stately halls. Smart people make smart choices.

Locally, Mary Institute and Country Day School (MICDS) propelled its brick building tradition into the 21st century with the newest addition to its campus. A timeline of brick buildings dating back nine decades stretches nearly half a mile north on Warson Road in Ladue. The latest entry in this cavalcade of brick beauties is the new 86,000 sq. ft. building housing the Science, Technology, Engineering and Math (STEM) Center, as well as an expanded Community Center for the Upper School.

“Brick was a major player in our design from the outset, as we needed to honor the campus tradition and the existing buildings,” said Todd Andrews, Principal at Centerbrook Architects of Centerbrook, Connecticut.

The new building is the major masonry component of a campus overhaul that includes exterior common spaces and entry plazas defined and accented by brick and limestone construction.

The MICDS campus resembles a small New England liberal arts college. Its multi-story brick buildings are adorned with Greek revival porticos, clock towers and cupolas. The new building housing Brauer and McDonnell Halls presents a modern approach to building design, while holding tight to tradition.

A considerable amount of glass, incorporated for natural day lighting, marries very well with the surrounding masonry. A superb color match of the new and existing bricks extends the traditional look seamlessly into a new century.

“It was very important to MICDS to get a really good color match,” said **Mark Wellen**, Vice President/Senior Project Manager for **BSI Construction**. “The existing buildings are over sixty years old. **JDS Masonry** and all their suppliers went above and beyond to find the best match.”

Smart design and brick buildings go hand in hand — especially in one combining STEM education with community gatherings. Tschudy Plaza is one of the entry points to the newest campus addition. A semi-circular brick wall welcomes visitors, funneling into campus via a walkway flanked by carved limestone capitals.

CONTINUED ON PAGE 5

2015 2016 SEMINAR SCHEDULE

MASONRY INSTITUTE OF ST. LOUIS

In 1971, a trust fund was established to promote the use of masonry materials. Through this trust fund, the Masonry Institute of St. Louis was created to serve as the promotional and technical arm in the Missouri counties of the Greater St. Louis area masonry industry.



REGISTERED PROVIDER

The Masonry Institute of St. Louis is a Registered Provider with the AIA Continuing Education System. Participants in all workshops presented by MISL earn Continuing Education Credits. A certificate showing credit earned is mailed annually in December. Most seminars earn AIA HSW credits and satisfy state professional development hours (PDH) requirements for Architectural and Engineering licensure.

MISSION STATEMENT

The purpose of the Masonry Institute of St. Louis is to promote the use of quality masonry materials and union masonry construction by serving as an educational and promotional resource for the use of brick, stone, glass and concrete masonry products in the commercial and residential markets.

Masonry Institute of St. Louis seminars are profession-specific. However, everyone is welcome to attend all programs.



2015 MASONRY INDUSTRY CONTRIBUTORS

PLATINUM LEVEL

Irwin Products, Inc. ■ Midwest Block & Brick
Raineri Building Materials ■ Spec Mix

GOLD LEVEL

American Steel Fabrication

SILVER LEVEL

Earthworks ■ Goedecke Co. ■ Oldcastle Midwest ■ York Manufacturing

BRONZE LEVEL

Acme Brick ■ Brentwood Building Supply
Building Products Corporation ■ Caliber Cast Stone
Enloe Enterprise LLC ■ Fabick CAT ■ General Material ■ Hilti, Inc.
Lemay Concrete Block ■ Luna & Associates, LLC
Midwest Cast Stone ■ Nu Way Concrete Forms ■ Pittsburgh Corning
Prosoco ■ Richards Brick ■ Roofing Sales Associates ■ TNE MEC
Trends in Masonry ■ VeneerStone ■ Wire-Bond



Certified Mason
Contractor Credits



AIA Continuing
Education Credits
(HSW)



MISL Professional
Development
Hours



Bricklayers'
Local #1
of Missouri



International
Masonry
Institute

REGISTER FOR SEMINARS AT (314) 645-5888 OR masonrystl.org

2015 2016 ARCHITECTURAL SEMINARS

All Architectural seminars are at the St. Louis Masonry Center, 1429 South Big Bend Boulevard, from Noon – 1 PM unless otherwise noted. Lunch is provided. Vegetarian meals are available upon prior request.

TORNADO & HIGH WIND SHELTERING WITH MASONRY

Wednesday, September 23, 2015

Speaker: Diane Throop, International Masonry Institute
When the 2015 International Building Code (IBC) is adopted in the greater St. Louis area, it will require new schools and emergency facilities to have a storm shelter meeting the requirements of the ICC 500, Standard for the Design and Construction of Storm Shelters. Join Diane Throop for an overview of these new requirements and how masonry can be used to provide safe, affordable storm shelters. Diane will also discuss new tornado missile testing that is opening doors for additional masonry options.

Sponsor: **Midwest Block & Brick**
www.midwestblock.com

ADVANCING CONSTRUCTION THROUGH MASONRY PREFABRICATION

Wednesday, October 28, 2015

Speaker: David T. Biggs, Biggs Consulting Engineering
Prefabrication, aided by tools such as Building Information Modeling (BIM), is gaining in popularity throughout the construction industry, including masonry. This presentation highlights the prefabrication of various masonry components and full buildings. Examples will be shown from actual projects where masonry prefabrication was implemented fully, or in combination with site-built methods. Key architectural and engineering aspects of masonry prefabrication will also be discussed.

Sponsor: **John J. Smith Masonry Co.**
www.smithmasonry.com

2015 I-CODES UPDATE: MASONRY DESIGN AND CONSTRUCTION REQUIREMENTS

Wednesday, November 18, 2015

Speaker: Jason Thompson
National Concrete Masonry Association

The International Code Council (ICC) published the 2015 "I-Codes" in 2014. A number of updates and revisions to these Codes will affect the design and construction of masonry. Join Jason Thompson for a review of key I-Code changes that will effect referenced masonry standards such as: TMS 402/602-13, Building Code Requirements and Specification for Masonry Structures; ACI 216.1/TMS 216-14, Standard Method for Determining Fire Resistance of Concrete and Masonry; TMS 302-12, Standard Method for Determining the Sound Transmission Class Rating for Masonry Walls; TMS 403-13 Direct Design Handbook for Masonry Structures.

Sponsor: **Irwin Products Inc.**
www.irwinproducts.com

ENERGY EFFICIENT SINGLE WYTHE DESIGN

Wednesday, January 27, 2016

Speaker: W. Mark McGinley, University of Louisville
Codes and standards continue to increase minimum energy efficiency provisions. Often this requires continuous insulation on the surface of single wythe masonry walls. This can adversely impact the cost and durability advantages of single wythe, especially for supermarkets and low rise box retail buildings.

Join Mark McGinley for an investigation of single wythe masonry walls that do not rely on prescriptive code requirements, but rather act holistically to produce cost effective, energy efficient buildings.

Sponsor: **Building Products Corporation**
www.buildingproductscorp.com

18TH ANNUAL MISL NEW PRODUCTS SHOW

Wednesday, February 10, 2016

The MISL product show returns for the 18th season. Join us to discover what's new, different, or even the same about great masonry products. This is a "not to miss" show for anyone in the building design and construction communities.

Time: 11:00 a.m. to 2:00 p.m.

Sponsors: **MISL Supplier Contributors**
RSVP not required.

BIM-M: PHASE III UPDATE

Wednesday, March 30, 2016

Speaker: Darrell McMillian, Masonry Institute of St. Louis
The Building Information Modeling for Masonry Initiative (BIM-M) is striving to increase wellbeing and safety by improving design and construction processes used for masonry structures. Join Darrell McMillian, BIM-M executive committee member, for an initiative update including developments from Phases I and II, Phase III progress, and outcomes expected during the final initiative phase, Phase IV.

Sponsor: **Lemay Concrete Block Co.**
www.lemayblock.com

EXPLORING THE TMS 602 / PROJECT MANUAL RELATIONSHIP

Wednesday, April 27, 2016

Speaker: Stephen Gantner, Jr., Cannon Design
TMS 602, Specification for Masonry Structures, is required to be specified for projects designed using TMS 402, Code Requirements for Masonry Structures. Join Stephen Gantner as he explores the proper relationship between TMS 602 and project manuals. Topics to include: TMS 402/602 overview, options for incorporating TMS 602 into project manuals, and the TMS 602 approach to field tolerances and special inspections.

Sponsor: **Heitkamp Masonry**
www.heitkampmasonry.com

THOMAS F. WALSH MEMORIAL LECTURE: "HISTORY OF BRICK MAKING – USA"

Wednesday, May 25, 2016

Speaker: J. Gregg Borchelt, Brick Industry Association (Ret.)
Now retired from the BIA, Gregg Borchelt returns as the 2016 Walsh lecturer. For his "farewell" MISL presentation, Gregg will discuss the history of brick making in the United States. Join Gregg as he traces the methods of making brick including: the hand-molded brick, pressed brick, "Old World" influences, the industrial revolution, and Post-World War II advances leading to current and future brick making processes.

Sponsor: **Spencer Brickwork Inc.**
www.spencerbrickwork.com

REGISTER FOR SEMINARS AT (314) 645-5888 OR masonrystl.org

ST. LOUIS
MASONRY
CENTRE

2015 2016 ENGINEERING SEMINARS

All Engineering seminars are at the St. Louis Masonry Center, 1429 South Big Bend Boulevard, from Noon – 1 PM unless otherwise noted. Lunch is provided. Vegetarian meals are available upon prior request.

TORNADO & HIGH WIND SHELTERING WITH MASONRY

Tuesday, September 22, 2015

Speaker: Diane Throop, International Masonry Institute
When the 2015 International Building Code (IBC) is adopted in the greater St. Louis area, it will require new schools and emergency facilities to have a storm shelter meeting the requirements of the ICC 500, Standard for the Design and Construction of Storm Shelters. Join Diane Throop for an overview of these new requirements and how masonry can be used to provide safe, affordable storm shelters. Diane will also discuss new tornado missile testing that is opening doors for additional masonry options.

Sponsor: **Midwest Block & Brick**
www.midwestblock.com

ADVANCING CONSTRUCTION THROUGH MASONRY PREFABRICATION

Tuesday, October 27, 2015

Speaker: David T. Biggs, Biggs Consulting Engineering
Prefabrication, aided by tools such as Building Information Modeling (BIM), is gaining in popularity throughout the construction industry, including masonry. This presentation highlights the prefabrication of various masonry components and full buildings. Examples will be shown from actual projects where masonry prefabrication was implemented fully or in combination with site-built methods. Key architectural and engineering aspects of masonry prefabrication will also be discussed.

Sponsor: **John J. Smith Masonry Co.**
www.smithmasonry.com

2015 I-CODES UPDATE: MASONRY DESIGN AND CONSTRUCTION REQUIREMENTS

Tuesday, November 17, 2015

Speaker: Jason Thompson
National Concrete Masonry Association
The International Code Council (ICC) published the 2015 "I-Codes" in 2014. A number of updates and revisions to these Codes will affect the design and construction of masonry. Join Jason Thompson for a review of key I-Code changes that will effect referenced masonry standards such as: TMS 402/602-13, Building Code Requirements and Specification for Masonry Structures; ACI 216.1/TMS 216-14, Standard Method for Determining Fire Resistance of Concrete and Masonry; TMS 302-12, Standard Method for Determining the Sound Transmission Class Rating for Masonry Walls; TMS 403-13 Direct Design Handbook for Masonry Structures.

Sponsor: **Irwin Products Inc.**
www.irwinproducts.com

NEAR-SURFACE MOUNTED FRP RESEARCH

Wednesday, January 20, 2016

Speaker: John J. Myers, Missouri S&T
Ten reinforced masonry walls built at Missouri S&T were subsequently strengthened with carbon fiber-reinforced polymer (FRP) utilizing a near surface mounted technique (NSM). Out-of-plane cyclic load testing was performed to determine the effects of FRP type and amount, mortar and

bond patterns, and FRP embedment material and depth. Join John Myers for a summary of test results including strength gain amounts and a discussion of ultimate failure modes.

Sponsor: **JDS Masonry**
www.jdsmasonry.com

18TH ANNUAL MISL NEW PRODUCTS SHOW

Wednesday, February 10, 2016

The MISL product show returns for the 18th season. Join us to discover what's new, different, or even the same about great masonry products. This is a "not to miss" show for anyone in the building design and construction communities.

Time: 11:00 a.m. to 2:00 p.m.
Sponsors: **MISL Supplier Contributors**
RSVP not required

INTERNATIONAL EXISTING BUILDING CODE (IEBC) – PART III

Wednesday, March 23, 2016

Speaker: Phillip Shinn, Jacobs
Our IEBC "trilogy" concludes with Phillip Shinn returning to present an example building utilizing the masonry related chapters of Appendix A, which were discussed last season. Topics to include: brief summary of material presented during Parts I and II, example building overview, and the applicable 2015 IEBC provisions. Since Parts I and II were based on the 2012 IEBC, Phillip will also address key 2015 IEBC changes related to masonry structures.

Sponsor: **Grant Contracting**
www.grantcontracting.com

NEW! STRENGTH DESIGN MOMENT MAGNIFIER

Wednesday, April 20, 2016

Speaker: Richard Bennett, University of Tennessee
TMS 402-13 contains a "moment magnifier" option for the strength design of masonry slender walls. Join Dick Bennett, current TMS 402/602 Committee chair, for an overview of the new provisions. Discussion to include: moment magnifier development, comparison of moment magnifier and existing P-delta provisions, and practical wall examples highlighting differences in resulting design moments and deflections.

Sponsor: **Trends In Masonry**
www.trendsinmasonry.com

STRUCTURAL MASONRY DESIGN SOFTWARE VERSION 7.0

Wednesday, May 18, 2016

Speaker: Darrell McMillian, Masonry Institute of St. Louis
Version 7.0 of this handy design tool, originally developed by the National Concrete Masonry Association, is now available. The latest version updates the software to the 2015 IBC and 2013 TMS 402/602. Join Darrell McMillian for an overview of the software update exploring its capabilities and uses for safe and efficient masonry design.

Sponsor: **Midwest Block & Brick**
www.midwestblock.com

REGISTER FOR SEMINARS AT (314) 645-5888 OR masonrystl.org

2015 2016 CODE OFFICIALS

All Code Officials seminars are at the St. Louis Masonry Center, 1429 South Big Bend Boulevard, from Noon – 1 PM unless otherwise noted. Lunch is provided. Vegetarian meals are available upon prior request.

BASIC MASONRY 101

Wednesday, October 14, 2015

Speaker: Darrell McMillian, Masonry Institute of St. Louis
This session provides an overview of current materials and processes for constructing new masonry exterior wall envelopes. Topics to include: codes and standards, masonry units, mortars and grouts, flashing and weeps, anchors and ties, hot and cold weather precautions, field tolerances, and masonry cleaning. Current on-line masonry informational sources will also be discussed.

Sponsor: *Earthworks*

www.ewgroupinc.com

MASONRY FLASHING UPDATE

Wednesday, December 16, 2015

Speaker: Darrell McMillian, Masonry Institute of St. Louis
Join Darrell McMillian for an update session highlighting current masonry flashing types and installations. Topics to include: masonry flashing history and code requirements, sheet metal flashing, flexible flashing, flashing accessories, typical flashing locations and common installation issues.

Sponsor: *Heitkamp Masonry*

www.heitkampmasonry.com

18TH ANNUAL MISL NEW PRODUCTS SHOW

Wednesday, February 10, 2016

The MISL product show returns for the 18th season. Join us to discover what's new, different, or even the same about great masonry products. This is a "not to miss" show for anyone in the building design and construction communities.

Time: 11:00 a.m. to 2:00 p.m.

Sponsors: *MISL Supplier Contributors*

RSVP not required

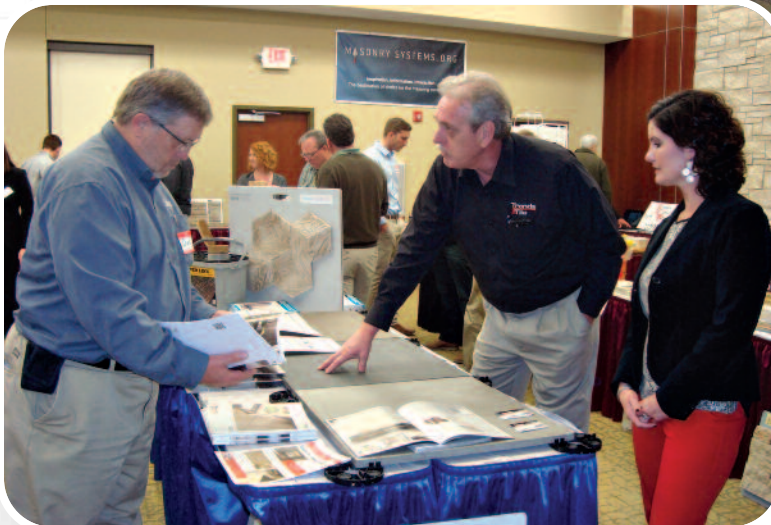
MASONRY SEISMIC DESIGN FOR CODE OFFICIALS

Wednesday, April 13, 2016

Speaker: Darrell McMillian, Masonry Institute of St. Louis
International Building Code references TMS 402, Building Code Requirements for Masonry Structures, for the seismic detailing of masonry buildings. This presentation is an overview of the related masonry seismic code provisions including: general seismic analysis requirements, masonry shear wall classifications, minimum seismic reinforcement, and seismic detailing related to the project Seismic Design Category.

Sponsor: *Spec Mix*

www.specmix.com



REGISTER FOR SEMINARS AT (314) 645-5888 OR masonrystl.org

ST. LOUIS
MASONRY
CENTRE



BRICK AND LIMESTONE WALLS AND PILLARS GREET VISITORS TO THE NORTH CAMPUS ENTRANCE PLAZA. THE SOFFIT, COLUMNS AND WALL PANELS ON THE SECOND LEVEL TERRACE ARE ALL INDIANA LIMESTONE. AT A GLANCE: OWNER – MARY INSTITUTE AND COUNTRY DAY SCHOOL; ARCHITECT – CENTERBROOK ARCHITECTS; GENERAL CONTRACTOR – BSI; MASON CONTRACTOR – JDS MASONRY; BRICK – MISSOURI BRICK; BLOCK AND STONE – MIDWEST BLOCK AND BRICK; FASTENERS, FLASHING – IRWIN PRODUCTS; SACK GOODS – RAINERI PRODUCTS; STONE – EARTHWORKS; CRAFTWORKERS: BRICKLAYERS' UNION LOCAL #1 OF MISSOURI, EASTERN MISSOURI LABORERS' DISTRICT COUNCIL.

A fractal pattern carved into the limestone reinforces the connection between curriculum and construction.

The new building has no formal name. It houses two halls — Brauer and McDonnell — in a sprawling multi-story brick incubator for thought, expression and growth. Brauer Hall houses offices, conference rooms and common areas — including an 800 seat amphitheater. This circular space establishes a curvilinear design pattern that is repeated on walls, walkways and common areas in combinations of brick and stone.

A curved limestone wall on the second story terrace of the teacher's lounge is the Brauer Hall's hidden gem, as it is not a public space available to the entire campus like so much of the building.

McDonnell Hall houses the STEM Center. Circularity asserts itself in the curved Indiana Limestone wall of the building's greenhouse section.

"This building is very unique, as it has a lot of curves and oval shapes," said **Mark Wellen** of BSI. "It is a lot easier to build a box. Everything is more difficult with curves. The masons met this challenge with incredible professionalism."

The freestanding curved brick colonnade in the courtyard formed by the new building is a point of pride for all involved in this project.

"Building this was very intense — coordinating the stone heights, the corners, the arches," said **Jeff Schmidt**, President of JDS Masonry. "It was the coolest part of the project. The colonnade extends for a straight course, and then it curves. The precision of the work by our bricklayers and mason tenders is very impressive. They did a great job." Serpentine stonewalls repeat the circular pattern established by the garden wall in a courtyard made of Earthworks Gold Limestone capped with Indiana Limestone.

THE STEM CENTER'S GARDEN WALL COMBINES ARCHES, CURVES AND MASONRY EXECUTED IN PERFECT BALANCE AND HARMONY. VISION, CRAFTSMANSHIP AND MATERIAL INTERSECT TO CREATE A SUNLIT WONDER AT MIDDAY.



MASONRY: THE SMART CHOICE CONTINUED FROM PAGE 5

Earthworks Gold Stone — which is quarried and fabricated right here in Missouri — was used for the exterior. It helped differentiate between the more refined limestone that was used for window sills and lintels and the rougher limestone used on the exterior spaces.

Chief Financial Officer **Becky Young** served as the school's liaison with the contractors. "This project included several complicated architectural details and the masonry contractor successfully implemented the architect's design intent. The contributions and efforts of all the design and construction team members, including the masonry contractor, resulted in a beautiful well-designed, well-built facility that provides remarkable spaces for teaching and learning and building community," said Young.

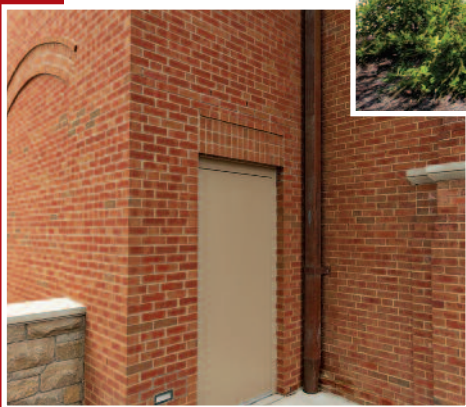
Buying supplies and material locally was a smart move for the design team, as it helped the project achieve LEED Platinum certification. "By sourcing the materials within a 500 mile radius of the job, we could apply for the higher LEED certification.

All the local masonry suppliers were of great assistance in that part of the process," said **Mark Wellen** of BSI. **M**



ABOVE: A SERPENTINE LIMESTONE WALL CIRCLES AT THE COURTYARD CENTER TO CREATE A COMMON SPACE CONDUCIVE TO LEARNING AND GROWING.

BELOW: NATIVE LIMESTONE MERGES WITH INDIANA LIMESTONE AND BRICK VENEER ON THE EAST FACE OF MCDONNELL HALL. THE STEM CENTER'S GREENHOUSE WINDOWS ARE FRAMED BY INDIANA LIMESTONE.



ABOVE: A DOWNSPOUT DEMARCATES THE LINE BETWEEN THE NEW BUILDING ON THE LEFT AND THE EXISTING BRICK STRUCTURE ON THE RIGHT. GREAT CARE WAS TAKEN TO FIND THE RIGHT BLEND OF BRICK COLORS AND THE RIGHT MORTAR COLOR TO MATCH THE EXISTING BUILDINGS ON THE CAMPUS.

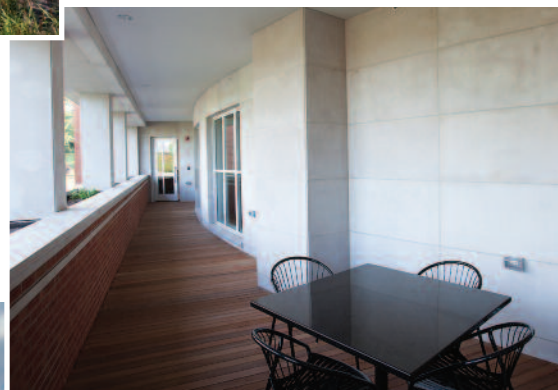


LEFT: THE FIRST LIMESTONE CAPPED TIER OF THE SEMICIRCULAR TWO TIER BRICK WALL OF TSCHUDY PLAZA SERVES AS BENCH SEAT. THE BRICK ENTRY ESTABLISHES A CONNECTION TO THE CAMPUS TRADITION.



ABOVE: RECESSED LAYERS OF BRICK VENEER ENHANCE THE BEAUTY OF THE BRICK COLUMNS IN THE GARDEN WALL. THE PRECISE, TECHNICAL SKILLS DISPLAYED BY MASONS AND MASON TENDERS OF BRICKLAYERS LOCAL #1 WERE CRITICAL TO THE SUCCESSFUL EXECUTION OF THIS AMBITIOUS DESIGN.

BELOW: CRAFTING A CURVED WALL FROM INDIANA LIMESTONE PANELS REQUIRED A LEVEL OF MASTERY ONLY ATTAINED BY ELITE MASONS. THE MASONS AND MASON TENDERS OF BRICKLAYERS LOCAL #1 CREATED THIS HIDDEN GEM ON THE EXTERIOR TERRACE LEVEL OF BRAUER HALL.



BELOW: A CARVING OF THE SCHOOL'S MASCOT ADORNS THE LIMESTONE PANELS OF BRAUER HALL'S EXTERIOR HEARTH. SIXTEEN PIECES OF 4" DEEP LIMESTONE ENCLOSE A GAS FIREPLACE.



NEW PRODUCT, NEW BUILDING

AT A GLANCE...

Architect – Archimages

General Contractor –
Holland Construction Services

Mason Contractor – Grant Masonry

Brick – Richards Brick

CMU – Midwest Products Group

Cast Stone – Midwest Cast Stone

Caulking – George McDonnell & Sons

Rebar – American Steel Fabrication

Craftworkers – Bricklayers' Union

Local #1 of Missouri, Eastern
Missouri Laborers' District Council

City of O'Fallon, Illinois Uses One-Step Product for A Department Garage and Headquarters

The City of O'Fallon, Illinois needed a new headquarters and garage for their Parks and Recreation maintenance division. Architect **Jeff Williams**, of **Archimages** selected the one-step product for the utility building.

This system provides very impressive “R”-values and utilizes the thermal mass which is inbound of the insulation and has a built in air/weep cavity for moisture resistance through the building envelope. The inside face of the block and the outside face are connected with plastic — creating no direct thermal path.

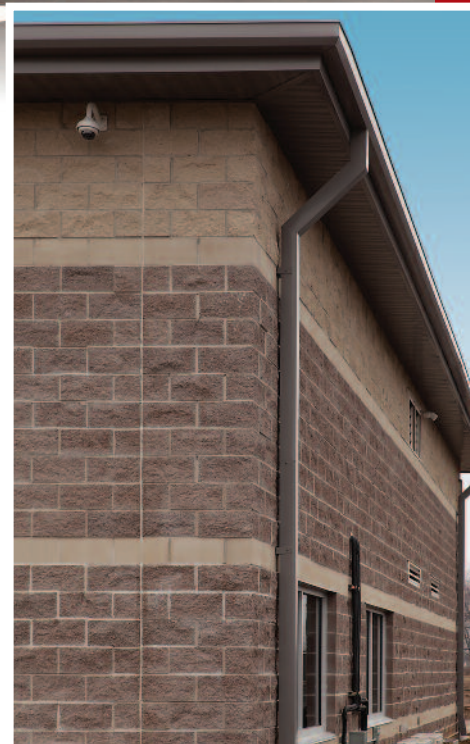


The parks building was designed and built at the same time as its neighbor — the new firehouse and headquarters. Because this product is available in multiple colors in assorted masonry faces, the architect was able to match the color of the brick firehouse and remain in budget and on time. This extremely strong wall system provides a 4-hour fire rating. The parks building needed to economize in its construction, but at the same time provide a visual complement for the new brick firehouse.



The new building features multiple bays for the parks department's maintenance vehicles as well as new office space. Prior to this construction the parks department had its equipment scattered around town in several smaller garages and sheds. Consolidating the gear under one roof allows them greater efficiency in operation and equipment maintenance.

“This building is built to last. We are glad to have a good, strong, durable building for our headquarters,” said **Jamie Frank**, Parks and Grounds Superintendent, **City of O'Fallon**.



A CREATIVE BLEND OF COLOR BLOCKS FOR TRIM AND ACCENTS HELPS ADD VISUAL INTEREST TO A LARGE, UTILITARIAN STRUCTURE.



1429 S. Big Bend Blvd.
St. Louis, MO 63117

MASONRY is a
publication of the
Masonry Institute
of St. Louis.

Darrell McMillian
Technical Director

Michael DeFilippo
Managing Editor

Gobberdiel
Graphic Design
Design & Production

Phone: 314-645-5888
Fax: 314-645-5898
www.masonrystl.org
www.homeDESIGNstl.com



PHOTO COURTESY OF MCAA

MCAA CHAIRMAN MARK KEMP (LEFT),
AND JOHN SMITH JR., PRESIDENT,
JOHN J. SMITH MASONRY CO.

John Smith Jr., President of John J. Smith Masonry Co., is the recipient of this year's C. DeWitt Brown Leadman Award presented by the Mason Contractors Association of America (MCAA).

Smith is no stranger to achievement, having experienced success as an athlete in high school and college and as a Boy Scout, where he entered the prestigious Order of the Arrow in the Eagle Scouts. This award coincides with Smith's fortieth year in the masonry industry. Following in the footsteps of his father, first as a bricklayer, then as the head of a successful mason contracting company, Smith has been a tireless advocate for the industry. He has held a wide range of leadership positions in both the **Mason Contractors Association of St. Louis** and the **MCAA**, and is also a former Chairman of the **Masonry Institute of St. Louis**.

MCAA Chairman Mark Kemp remarked "We in the industry are all indebted to John Smith Jr. for his innumerable efforts in the advancement of masonry over his accomplished career. We all continue to benefit from his legacy of leadership and innovation."



MASONRY INDUSTRY PLATINUM SPONSORS

